

F910

Feed-through seal for flexible connection

F910 is a lead-through seal for flexible connection of all types of pipes to wells / pipes or concrete walls. The holes can be prefabricated or drilled.

Quality assurance

The F910 meets the functional requirements according to all current European standards.

SS-EN ISO 9001: 2000
British Standard "Kitemark"
CE marking

Material

F910 is made of synthetic rubber (SBR / EPDM) with a hardness of 40 ± 5 IRHD. The material corresponds to the requirements of the European standard EN 681-1. Some dimensions can also be supplied in nitrile rubber (NBR).

Marking

Each seal is marked with outer diameter and thickness, connecting pipe outer diameter and hole diameter and date of manufacture.

Dimensions

Necessary hole diameter is calculated from the outer diameter of the pipe.

Hole diameter = outer diameter of the pipe + 26 mm

Example:

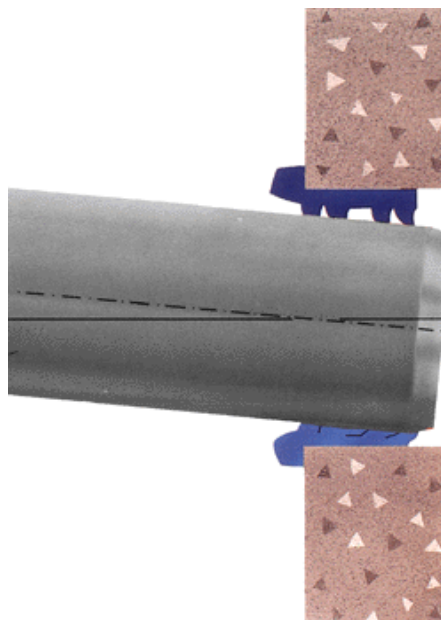
Size plastic pipe 160 mm

Marking 160/186

Outer diameter tube 160 mm

Hole diameter $160 + 26 = 186$ mm

Note: In some smaller dimensions, deviations from the principle may occur.



Assembly instructions

**1. Press the well seal into the drilled hole.
Do not use lubricant.**

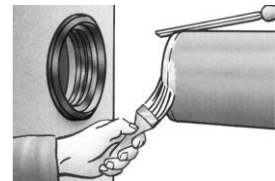
2. Phase the end of the connecting pipe and lubricate it with Wideco lubricant or other lubricant approved by the manufacturer.

3. Center the pipe end and push the pipe into the seal so that the pipe end is level with the inner wall.

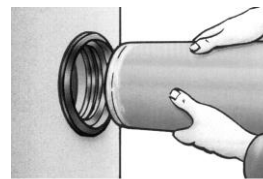
Contact WiSecure AB for installation recommendations.



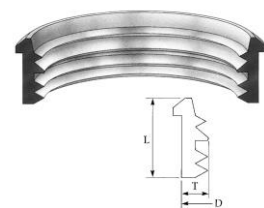
1.



2.



3 Skjut in röränden i brunns genomföringen



3.

Pipe dimensions

DIMENSIONS OD IN MM

PIPE OD	DIM. MARK.	ART. NR	BOREHOLE
32	32/53	1584732	53
50	50/75	1584702	75
75	75/101	1642306	101
90	90/111	1001803	111
110	110/138	1588606	138
125	125/151	1568103	151
160	160/186	1584905	186
200	200/226	1891706	226
225	225/251	1891804	251
234	234/260	9901128	260
250	250/276	1891902	276
280	280/306	1892003	306
286	286/312	1807605	312
315	315/341	1892101	341
400	400/426	1898104	426
500	500/526	1841201	526
568	568/594	9901129	594
668	668/694	9901130	694
890	890/925	9901131	925